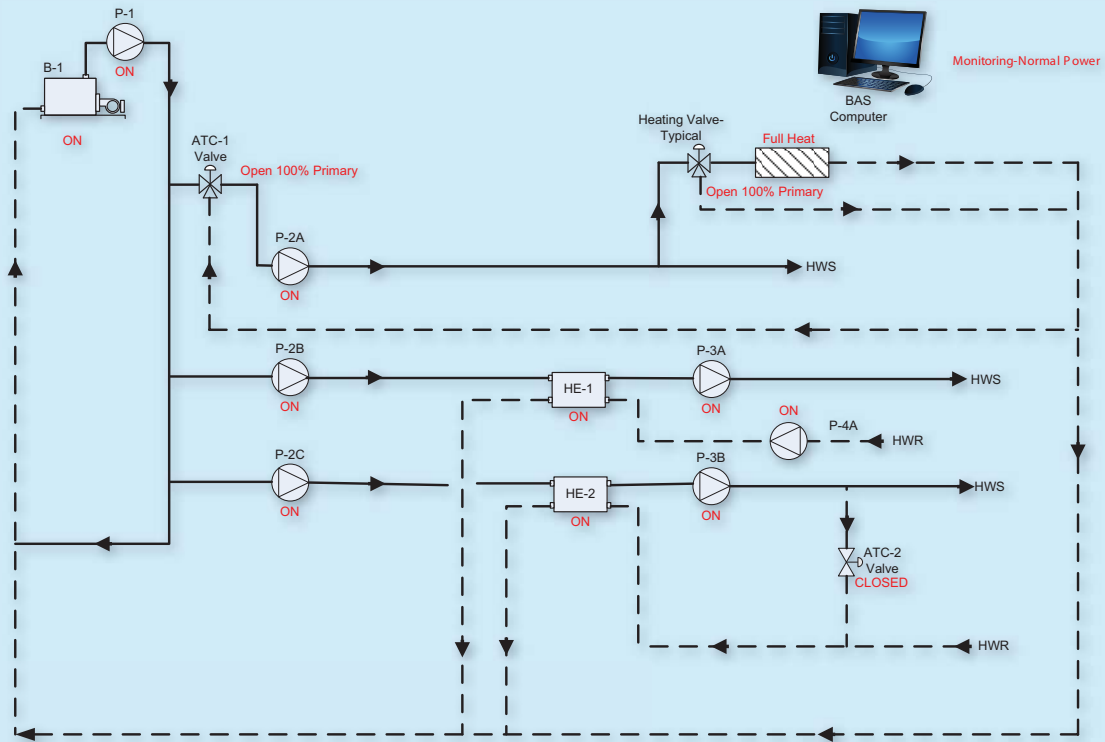


## MONTH 1 - The Energy Conservation Opportunity: Primary-Secondary Heating at an Industrial Building Application



Primary-Secondary Industrial Heating				1		2		3	
				Off-Fail Safe		On-Max Winter Heating		On-Normal Summer Heating	
Device	Tag	Description	Reaction	Status	Result	Status	Result	Status	Result
	ATC-1 Valve	Outdoor Air Compensated ATC Valve	Open 100% Primary Open 100% Secondary Modulating Between Primary & Bypass	X X X	Pass Pass Pass	X X X	Pass Pass Pass	X X X	Pass Pass Pass
	Heating Valve-Typical	Typical Building Heat ATC Valve	Open 100% Primary Open 100% Bypass Modulating Between Primary and Bypass	X X X	Pass Pass Pass	X X X	Pass Pass Pass	X X X	Pass Pass Pass
	BAS Computer	Building Automation System Interface	No Signal-No Power Monitoring-Normal Power Monitoring-Emergency Power ALARM	X X X X	Pass Pass Pass Pass	X X X X	Pass Pass Pass Pass	X X X X	Pass Pass Pass Pass
	B-1	Boiler	ON OFF STAGING/MODULATING	X X X	Pass Pass Pass	X X X	Pass Pass Pass	X X X	Pass Pass Pass
	Baseboard Heat-Typical	Building Heat Perimeter Radiation	Full Heat Partial Heat No Heat	X X X	Pass Pass Pass	X X X	Pass Pass Pass	X X X	Pass Pass Pass
	HE-1	Heat Exchanger-Domestic Hot Water-Heat Pump	ON OFF	X X	Pass Pass	X X	Pass Pass	X X	Pass Pass
	HE-2	Heat Exchanger-Process Heat	ON OFF	X X	Pass Pass	X X	Pass Pass	X X	Pass Pass
	P-1	Primary Pump	ON OFF	X X	Pass Pass	X X	Pass Pass	X X	Pass Pass
	P-2A	Secondary Pump-Building Heat	ON OFF	X X	Pass Pass	X X	Pass Pass	X X	Pass Pass
	P-2B	Secondary Pump-Domestic Hot Water	ON OFF	X X	Pass Pass	X X	Pass Pass	X X	Pass Pass

**ANSWERS:** To view and download this month's answers, visit [www.esmagazine.com](http://www.esmagazine.com).